



## Student Feedback Reports

### Academic Session 2020-21

#### ABBREVIATIONS:

X-axis	Criteria-II Plots	
Y-axis	% Feedback; Calculated on the basis of Score awarded vs Maximum Score	
I	Teaching & academic ambience	
II	Relevance of the course	
III	Resources provided to the students	
IV	Content material/ guidance	
V	Online Teaching (ICT)	
VI	Evaluation process	
VII	Mid Semester Examination	
VIII	Facilities regarding field projects/ internships	
IX	Career counseling and guidance for competitive examinations	
X	Overall perception for the Curriculum	
Q1	Quarter 1	June - August
Q2	Quarter 2	September - November
Q3	Quarter 3	December - February
Q4	Quarter 4	March - May

#### FEEDBACK SYSTEM:

Common questions, based on Criteria-II & SSS of NAAC parameters, were selected for Introspection of working and reflections of Rani Durgavati University perceived in the mind of our students. Google form for Feedback on ten criterions were sent to students via e-mail or What's app group of their department. One e-mail can be used once for sending the feedback in a quarter.

**Identity of students were kept confidential and no further communication in this regard is done either from IQAC RDVV or the Department concerned.**

To compare reflections projected by students, graphs are plotted in terms of percentage of score awarded vs maximum score possible for collected feedback responses.

Every question in Feedback form were assessed in range of numeral values from 1 to 5

reflecting Average to Excellent labels. [1= Average, 2= Good, 3= Very Good, 4= Excellent, 5= Outstanding].

Responses received from students via Google form feeded in already prepared Excel Sheet which produces graphical report in printable form and simultaneously prepare Power Point Presentation within a couple of seconds.

The feedback System used in Ranchi University was prepared by IQA Cell of Ranchi University and costs not a single penny for its operation and record keeping.

## QUESTIONS IN FEEDBACK FORMS:

### Aspect -I Teaching

- Q1 Your overall rating regarding teaching, learning and academic environment: 1= Average, 2= Good, 3= Very Good, 4= Excellent, 5= Outstanding
- Q2 Rate the Relevance of the course in the overall structure of program. 1= Average, 2= Good, 3= Very Good, 4= Excellent, 5= Outstanding
- Q3 Rate the resources provided to the students by the Department. 1= Average, 2= Good, 3= Very Good, 4= Excellent, 5= Outstanding
- Q4 Have you received sufficient material/guidance during the course? Please rate. 1= Average, 2= Good, 3= Very Good, 4= Excellent, 5= Outstanding
- Q5 How do you rate Online Teaching (ICT) used for interaction. 1= Average, 2= Good, 3= Very Good, 4= Excellent, 5= Outstanding
- Q6 How do you rate the evaluation process? 1= Average, 2= Good, 3= Very Good, 4= Excellent, 5= Outstanding
- Q7 How do you rate the library resources in your department? 1= Average, 2= Good, 3= Very Good, 4= Excellent, 5= Outstanding
- Q8 How do you rate the facilities you get regarding undertaking field projects, internships? 1= Average, 2= Good, 3= Very Good, 4= Excellent, 5= Outstanding
- Q9 How do you rate the benefits you get by career counseling and guidance for competitive examinations offered by the University? 1= Average, 2= Good, 3= Very Good, 4= Excellent, 5= Outstanding
- Q10 Your Overall perception for the Curriculum: 1= Average, 2= Good, 3= Very Good, 4= Excellent, 5= Outstanding

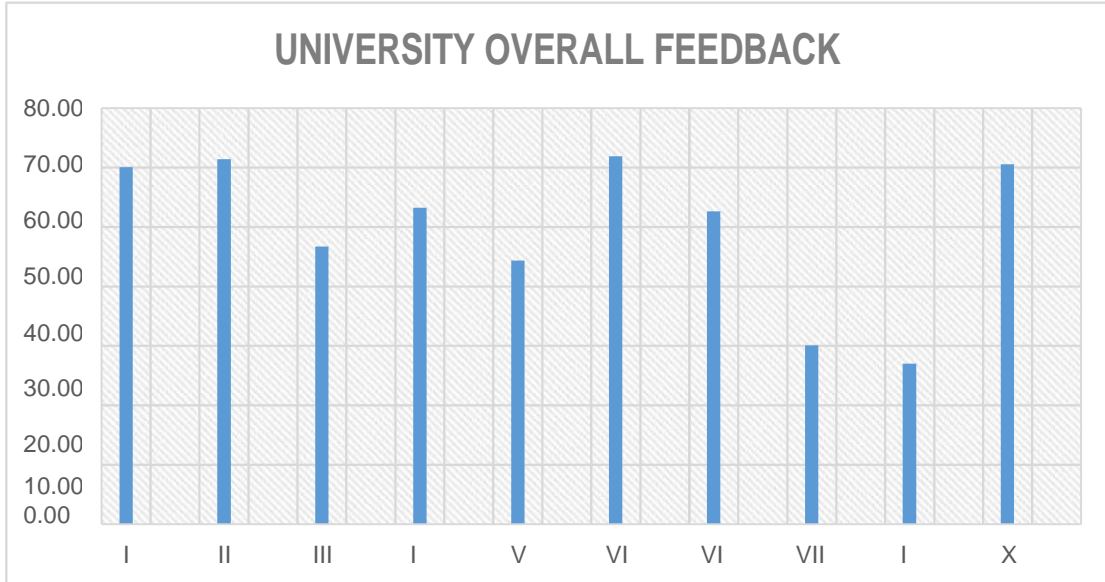
## UNIVERSITY OVERALL QUESTION WISE FEEDBACK

Quarter →

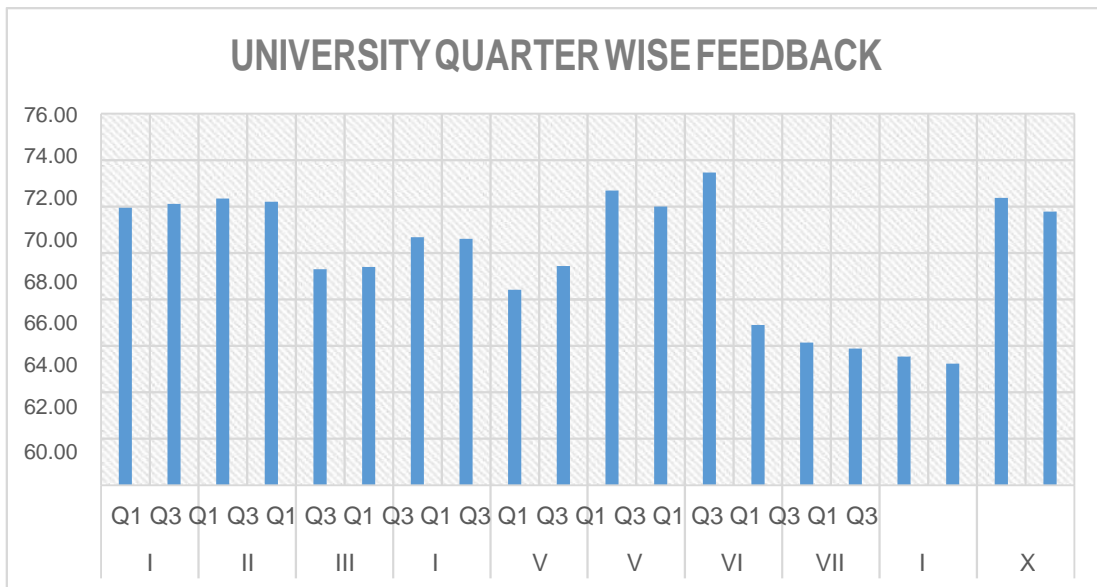
Q1
4500

Q3
3500

Total Feedbacks =



## UNIVERSITY QUESTION WISE QUARTER WISE FEEDBACK



**FACULTY WISE FEEDBACK**

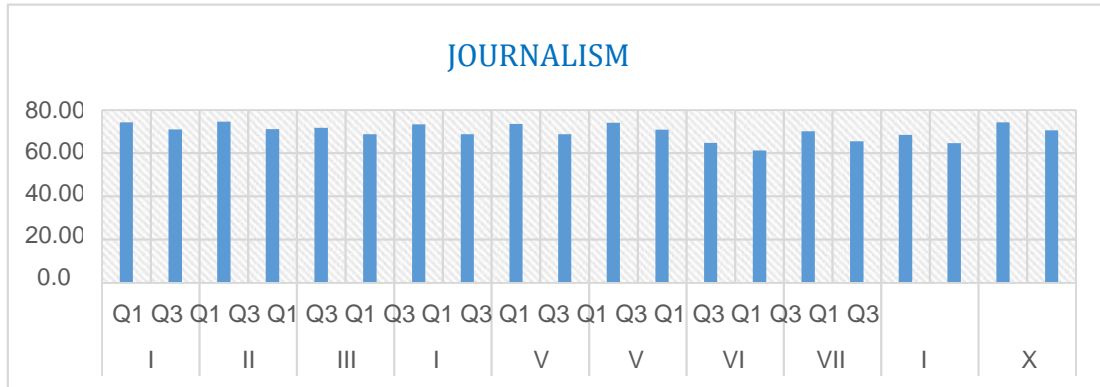
**Faculty of Arts**

Quarter →

Q1
50

Q3
10

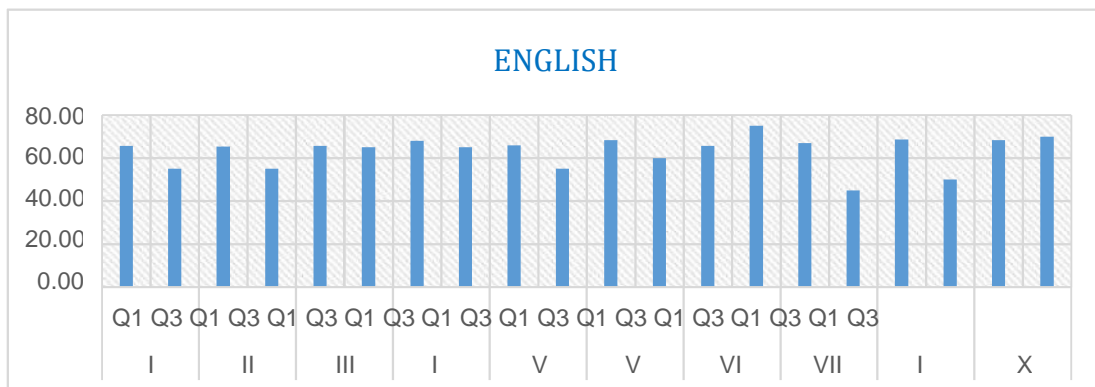
Total Feedbacks =



**English**

Quarter →

Total Feedbacks =



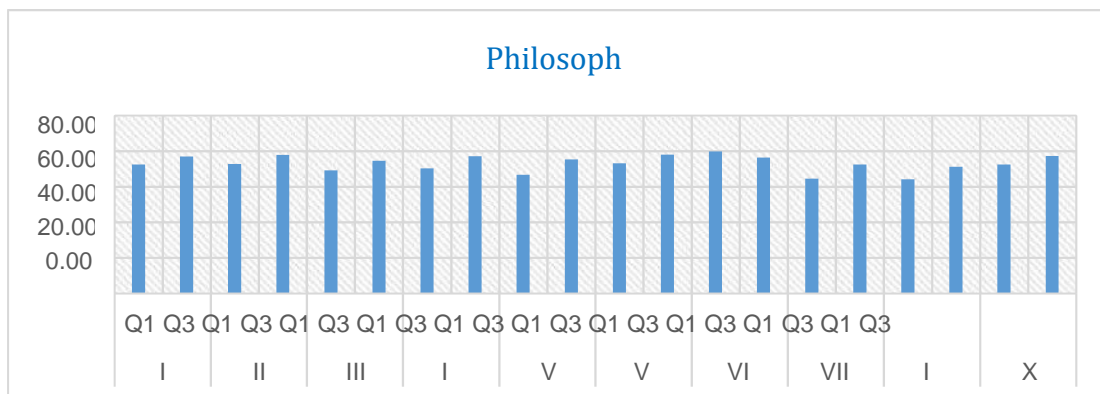
**Philosophy**

Quarter →

Total Feedbacks =

Q1
150

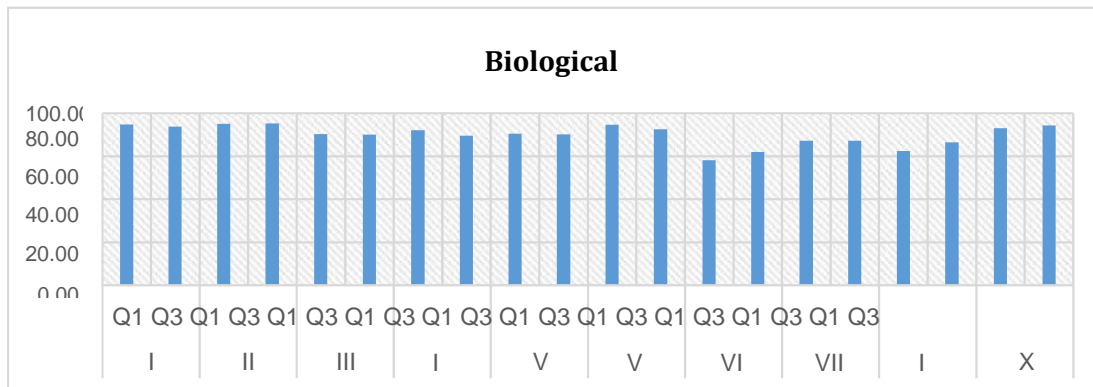
Q3
112



**DEPARTMENT WISE FEEDBACK  
HUMANITIES**

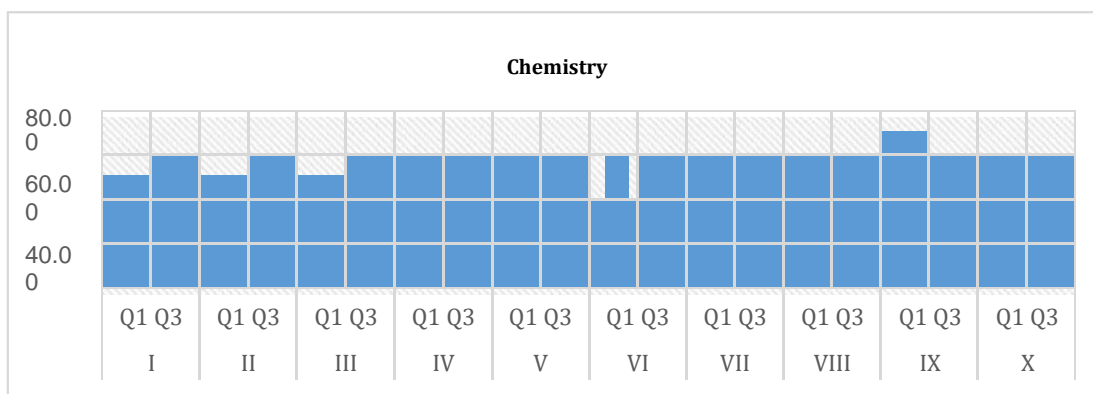
**1. Department of Biological Sciences**

Quarter →	Q1	Q3
Total Feedbacks =	408	143



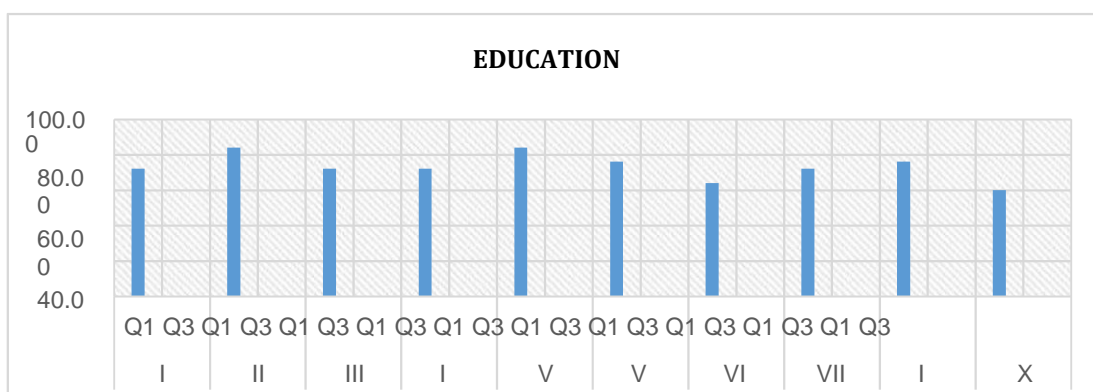
**2. Department of Chemistry and Pharmacy**

Quarter →	Q1	Q3
Total Feedbacks =	216	130



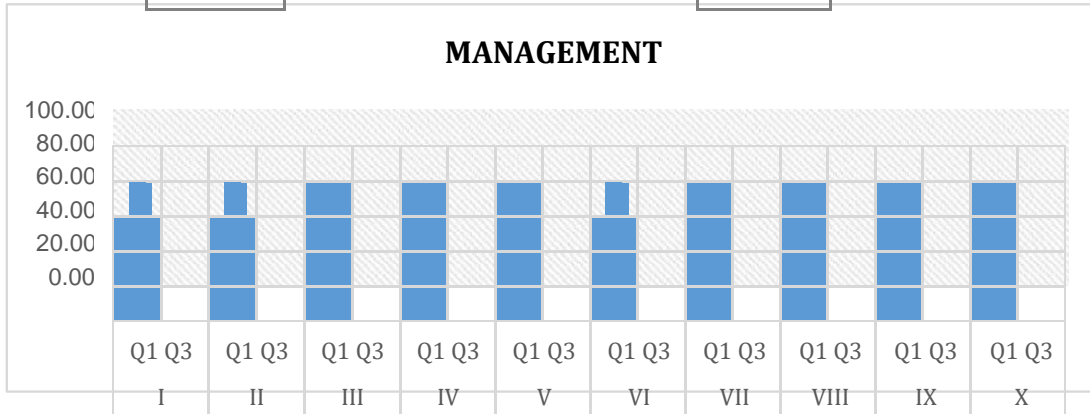
**3. School of Education**

Quarter →	Q1	Q3
Total Feedbacks =	205	203



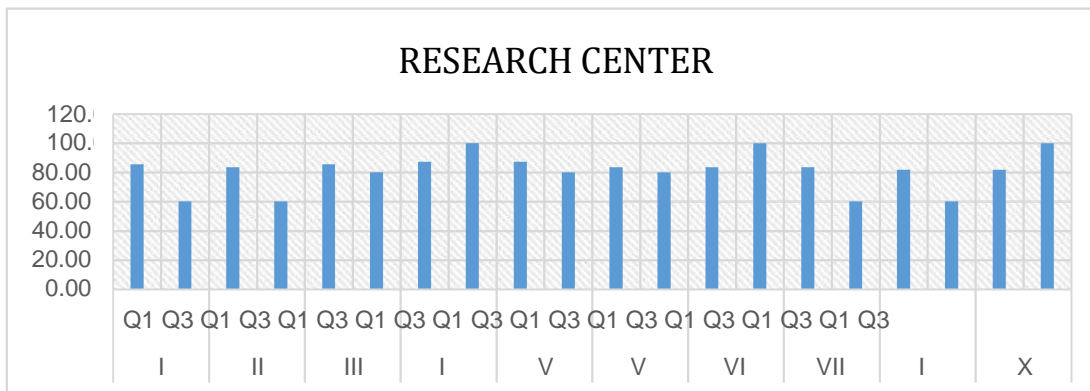
#### 4. University Institute of Management Commerce

Quarter →	Q1	Q3
Total Feedbacks =	558	120



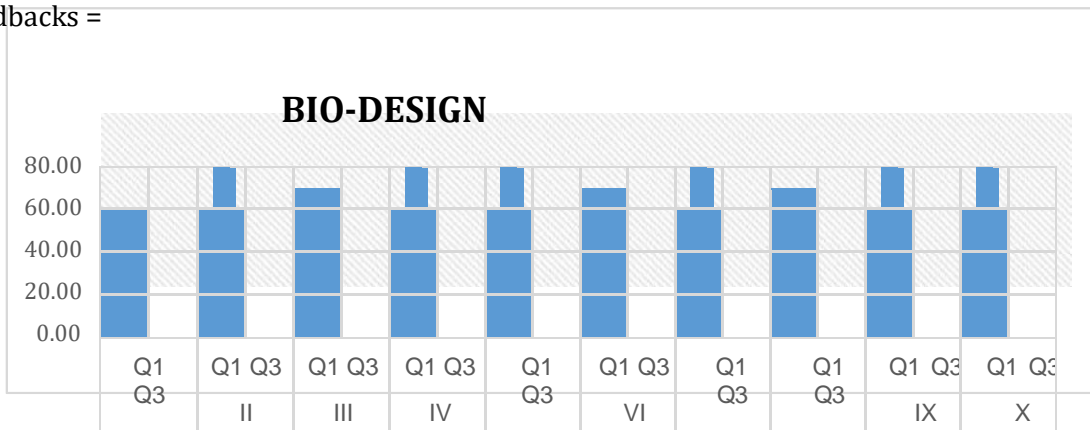
#### 5. Women's Studies And Research Center

Quarter →	Q1	Q3
Total Feedbacks =	150	15



#### 6. Bio-Design innovation Centre

Quarter →	Q1	Q3
Total Feedbacks =	120	15



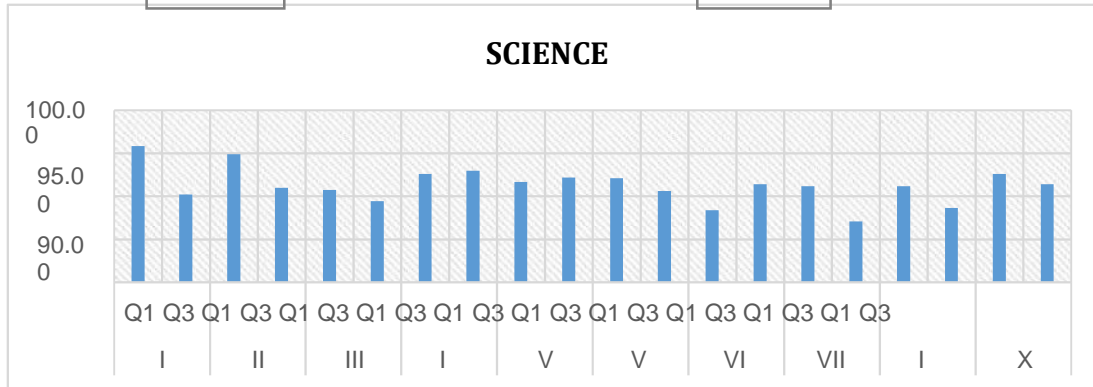
### 7. Uni. Institute of computer science and Applications

Quarter →

Total Feedbacks =

Q1
150

Q3
100



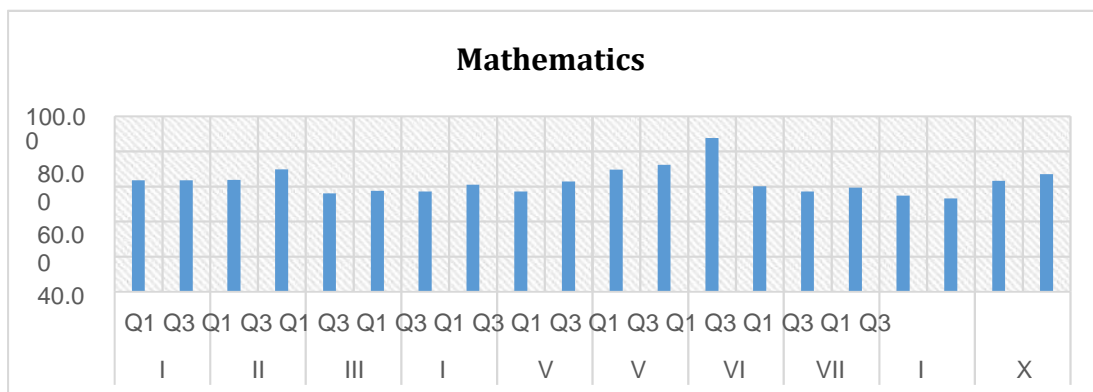
### 8. Mathematics and Computer Science

Quarter →

Total Feedbacks =

Q1
150

Q3
100



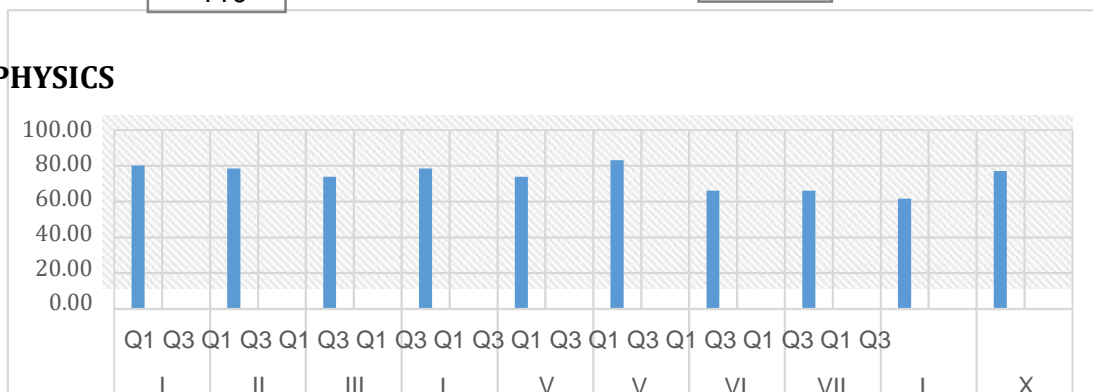
### 9. Department of physics and Electronics

Quarter →

Total Feedbacks =

Q1
110

Q3
66

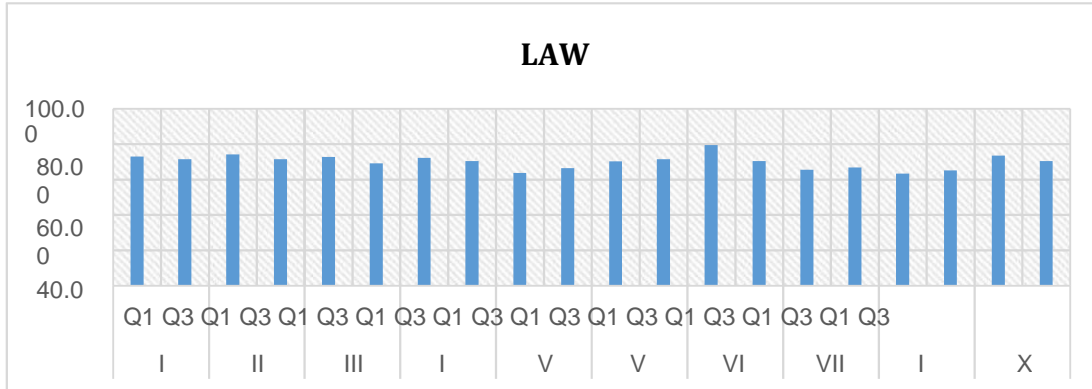




### 10. Department of Law

Quarter →	Q1
Total Feedbacks =	150

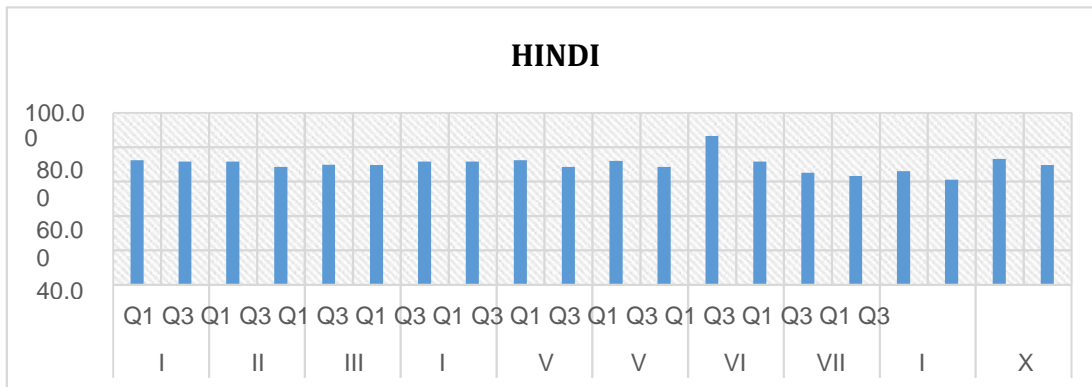
Q3
110



### 11. Department of Hindi Linguistics

Quarter →	Q1
Total Feedbacks =	140

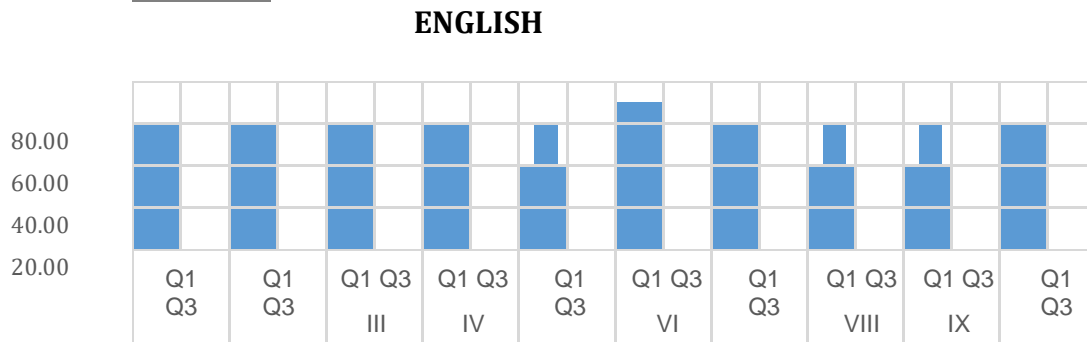
Q3
150



### 12. Department of English

Quarter →	Q1
Total Feedbacks =	160

Q3
140

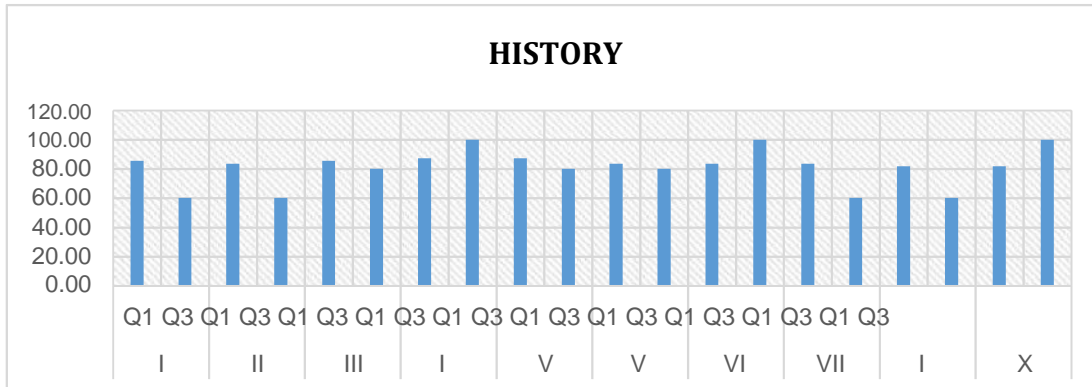




### 13. Department of Ancient Indian History culture and Archaeology

Quarter →	Q1
Total Feedbacks =	116

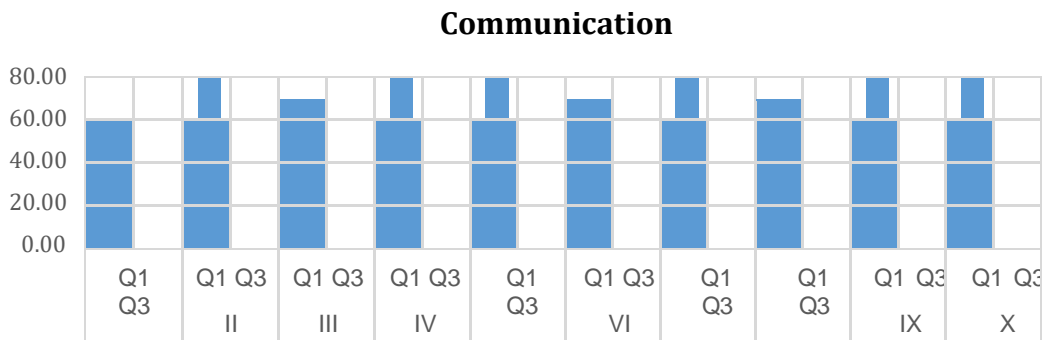
Q3
115



### 14. Department of Communication Studies and Research

Quarter →	Q1
Total Feedbacks =	140

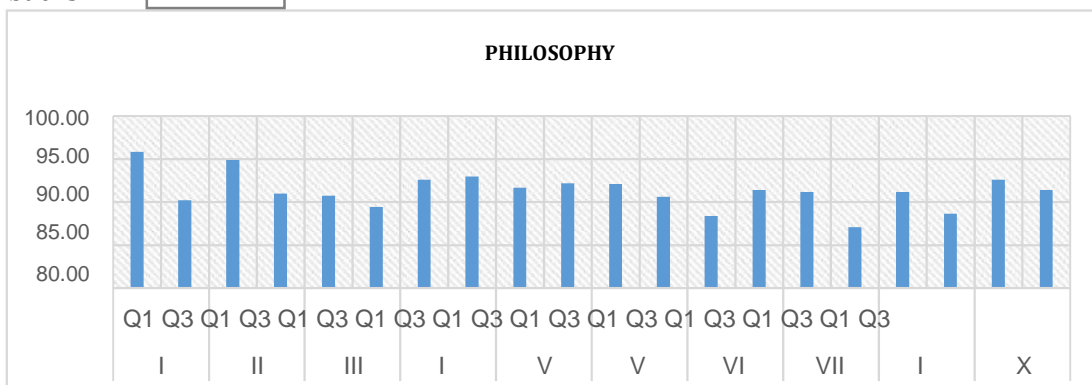
Q3
90



### 15. Department of Philosophy

Quarter →	Q1
Total Feedbacks =	150

Q3
110



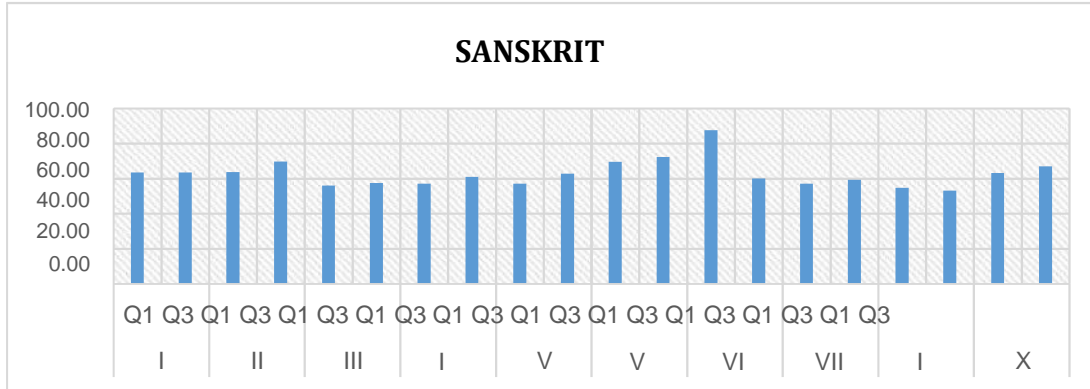
**16. Department of Sanskrit and Prakrit**

Quarter → 

Q1
570

  
Total Feedbacks =

Q3
55



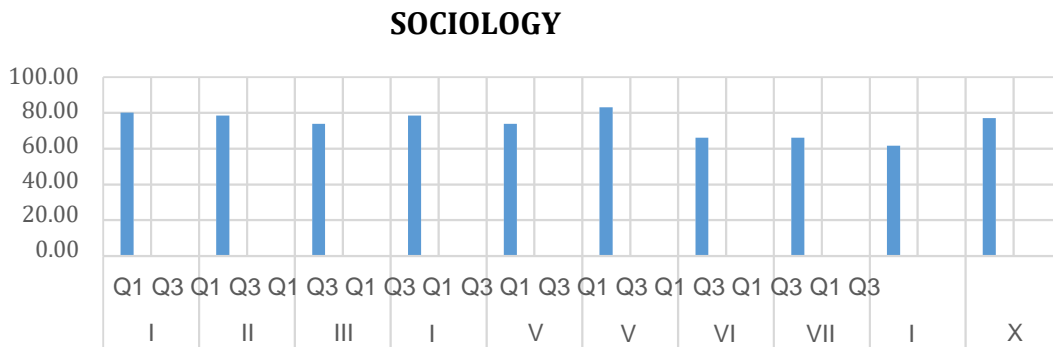
**17. Department of Sociology**

Quarter → 

Q10
550

  
Total Feedbacks =

Q3
110



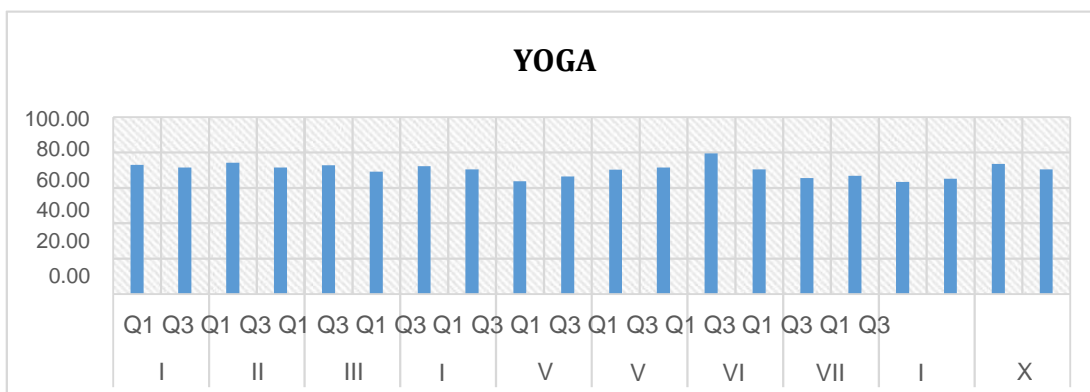
**18. Department of Yoga**

Quarter → 

Q1
656

  
Total Feedbacks =

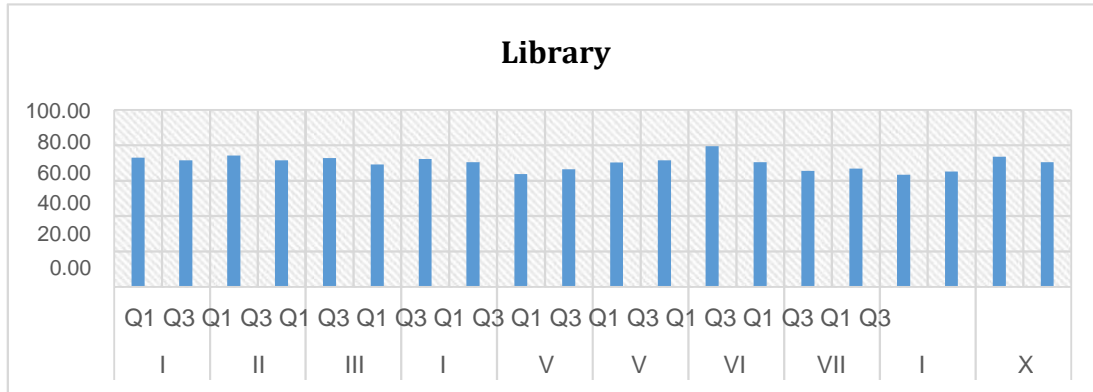
Q3
0



## 19. Department of Library and Information Science

Quarter →	Q1
Total Feedbacks =	570

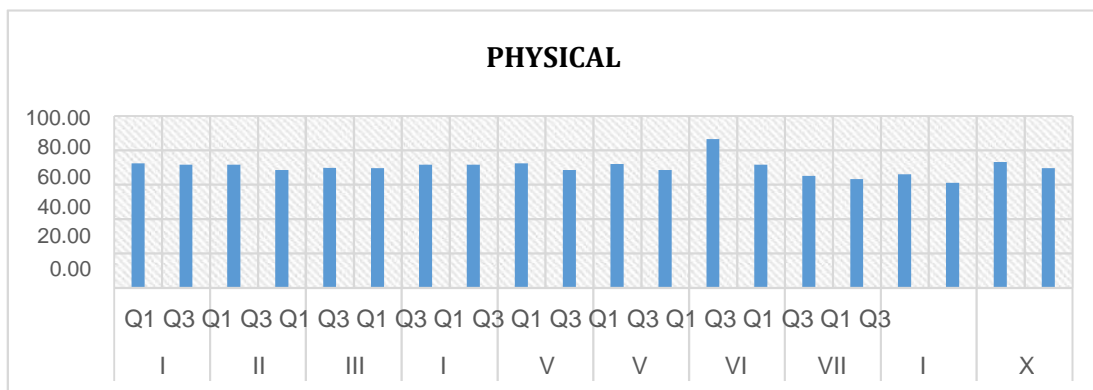
Q3
140



## 20. Department Physical Education

Quarter →	Q1
Total Feedbacks =	390

Q3
10

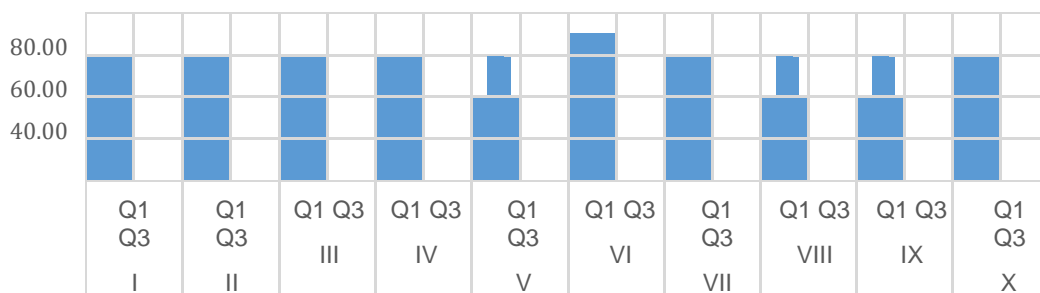



## 21. Department of Vocational Studies & skill Development

Quarter →	Q1
Total Feedbacks =	330

Q3
69

### Vocational



  
 Dr. (Mrs) Rajeshwari Rana  
 NAAC & IQAC Coordinator